

## The SpectraZyme™ Gluten Digest Difference

SpectraZyme Gluten Digest is designed for those who are avoiding gluten.

	SpectraZyme Gluten Digest (featuring clinically tested Tolerase® G)	Leading Enzyme
Designed to be effective as a single enzyme formula <sup>2,3</sup>	<input checked="" type="checkbox"/>	<input type="checkbox"/>
Demonstrated to be effective in acidic conditions similar to the stomach	<input checked="" type="checkbox"/>	<input type="checkbox"/>
Clinically shown to break down gluten before entering the small intestine, which is key to supporting digestive health and comfort <sup>2</sup>	<input checked="" type="checkbox"/>	<input type="checkbox"/>

Ask about **SpectraZyme Gluten Digest** today!  
Learn more at **SpectraZyme.ca**

**Triple GMP-Certified Manufacturing**



# Gluten

has met its match.

Introducing  
**SpectraZyme™ Gluten Digest**



Genetic Potential Through Nutrition



# SpectraZyme™ Gluten Digest

Designed for Greater Gluten Digestion



SpectraZyme Gluten Digest is an advanced gluten digestion support formula that contains one of the latest breakthroughs in supplemental enzyme research—Tolerase® G, a naturally occurring, non-animal-

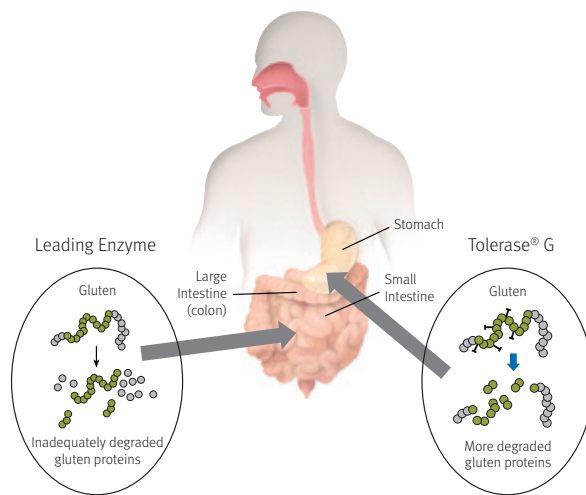
based enzyme that has been shown to effectively break down gluten. This formula is designed to offer a more timely, effective approach for those sensitive to gluten in wheat, barley, oats, rye grains, and other gluten sources.

## Gluten Is Everywhere

Gluten concerns are on the rise. According to a recent consumer research survey, almost one third of Canadians (10 million) are looking for gluten-free products with 2.5 million requiring gluten-free products for medical reasons.<sup>1</sup>

Following a gluten-free diet can be difficult, and there is a multitude of “hidden” sources—including candy, sauces, condiments, processed meats, vegetarian proteins, as well as flavours, colourings, and texturizers for many different products. Individuals seeking to avoid gluten may benefit from additional support with a digestive enzyme supplement.

## More Effective Gluten Breakdown with Tolerase® G



## A More Efficient Design to Aid Gluten Digestion

The leading digestive enzyme in many popular gluten-digestion support formulas has limited human clinical data. And in laboratory testing, it's been shown to be unstable under more acidic conditions (e.g., among digestive juices) and unlikely to break down gluten proteins in the stomach. This means that more complex, inadequately degraded gluten protein fragments might pass through to the small intestines.

SpectraZyme Gluten Digest contains an enzyme known as Tolerase® G that has been shown in laboratory and human studies to effectively degrade gluten proteins.<sup>2,3</sup> This unique enzyme has also been shown in a placebo-controlled clinical study to break down gluten proteins before they reach the small intestine, which is key for supporting digestive health and comfort.<sup>3</sup>

➔ Talk to your healthcare provider today about **SpectraZyme Gluten Digest** or visit **SpectraZyme.ca**

1 <http://www.agr.gc.ca/eng/industry-markets-and-trade/statistics-and-market-information/by-product-sector/processed-food-and-beverages/reports-and-resources-food-processing-innovation-and-regulations/gluten-free-claims-in-the-marketplace/?id=1397673574797>

2 Stepniak D, et al. *Am J Physiol Gastrointest Liver Physiol*. 2006;291:G621-G629.

3 Salden BN, Monserrat V, Troost FJ, et al. *Aliment Pharmacol Ther*. 2015;42(3):273-285.

Tolerase® G is a registered trademark of DSM.